

APPARATUS, SPECIAL TEAMS, AND ASSETS



ENGINE COMPANIES



TRUCK COMPANIES



SQUAD & HEAVY RESCUE COMPANIES



TENDERS/TANKERS



BRUSH TRUCKS



HAZARDOUS MATERIAL TEAMS

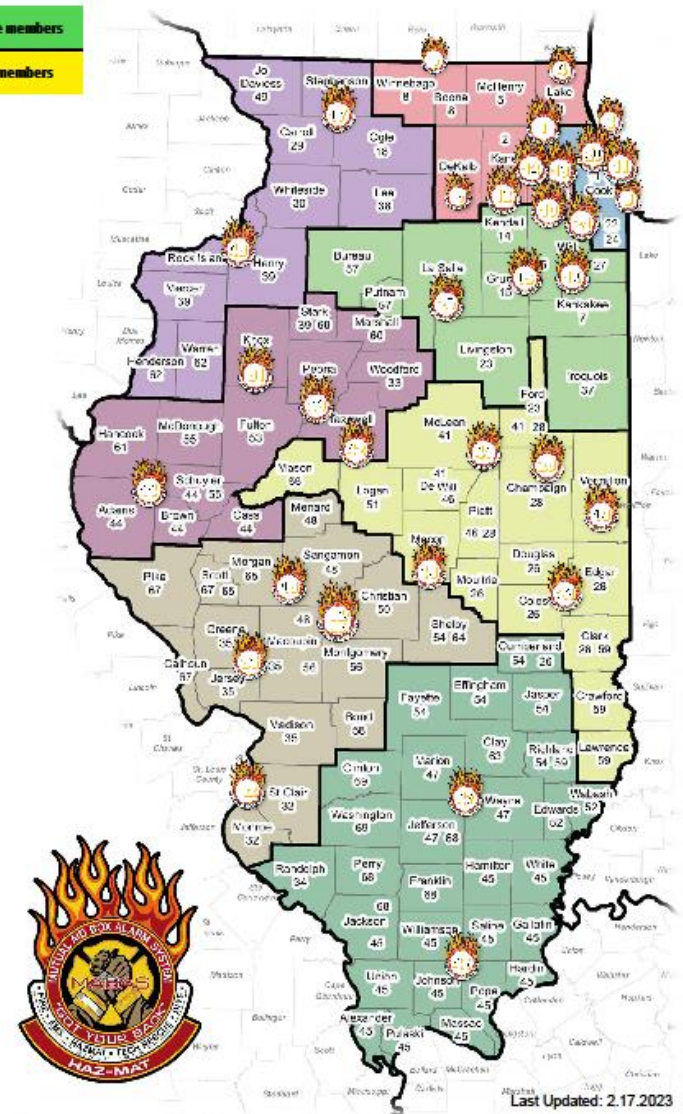
- STATEWIDE DEPLOYABLE TEAMS CAPABLE OF -
- MONITORING
- DETECTION
- CONTAINMENT
- MITIGATION

AVAILABLE BY
INTERDIVISIONAL REQUEST

ILLINOIS MUTUAL AID BOX ALARM SYSTEM Hazardous Material Team Locations

Statewide Deployable	20 or more members
	14 - 19 members

Division	Haz-Mat
1	1
3	3
4	4
6	6
8	8
9	9
10	10
11	11
12	12
13	13
15	15
16	16
17	17
19	19
20	20
21	21
25	25
26	26
28	28
31	31
32	32
35	35
36	36
40	40
41	41
42	42
43	43
44	44
45	45
46	46
47	47
48	48
50/56	50/56



HAZARDOUS MATERIALS SUPPORT



RADIAC



HAZMAT ID



RAD 57



DRÄGER X-SITE

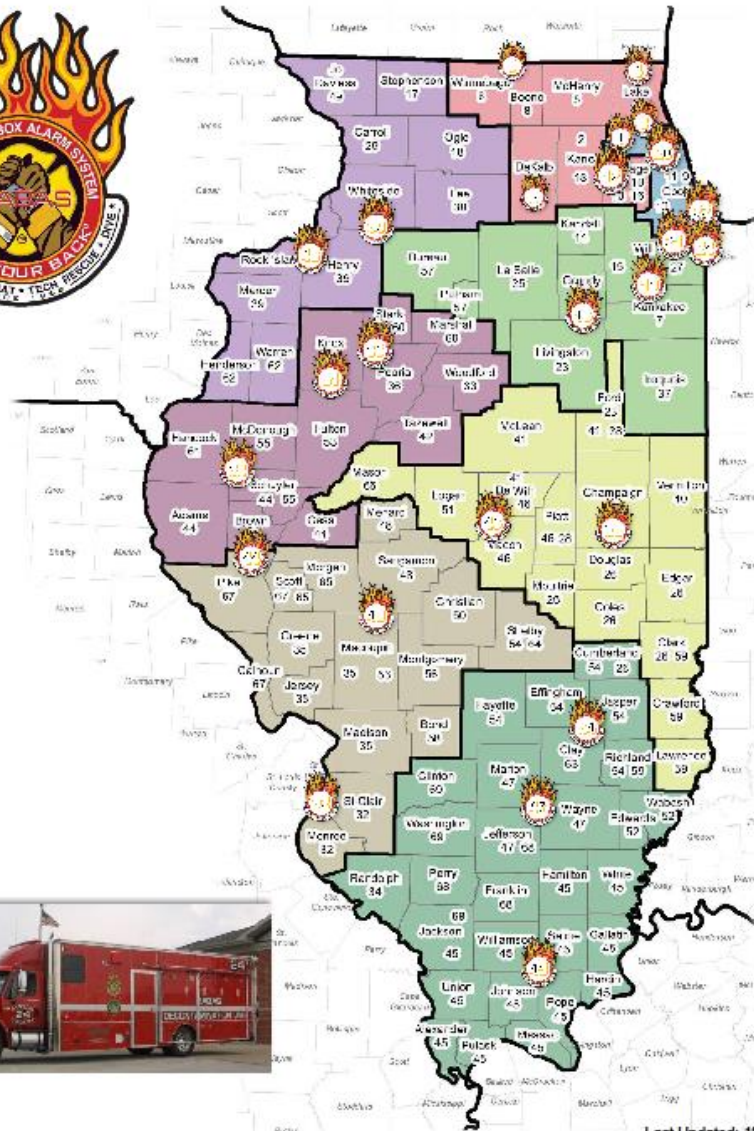
DECON VEHICLES



- **THE DECON VEHICLE IS A SUPPORT VEHICLE FOR ANY TYPE OF INCIDENT:**
 - **25 VEHICLES ACROSS THE STATE, AVAILABLE BY INTERDIVISIONAL REQUEST**
 - **DECONTAMINATION CAPABILITIES FOR APPROXIMATELY 200 PERSONS**
 - **6 INTERIOR AND 4 EXTERIOR SHOWERS**
 - **CAPABLE OF FLOWING 40 G.P.M. OF WATER**
 - **CAN BE USED AS A REHAB VEHICLE**
 - **WARMING OR COOLING SHELTER**

ILLINOIS MUTUAL AID BOX ALARM SYSTEM

Decontamination Vehicle Locations



Last Updated: 10.19.2020

WATER RESCUE TEAMS



- 16 MABAS DEPLOYABLE TEAMS

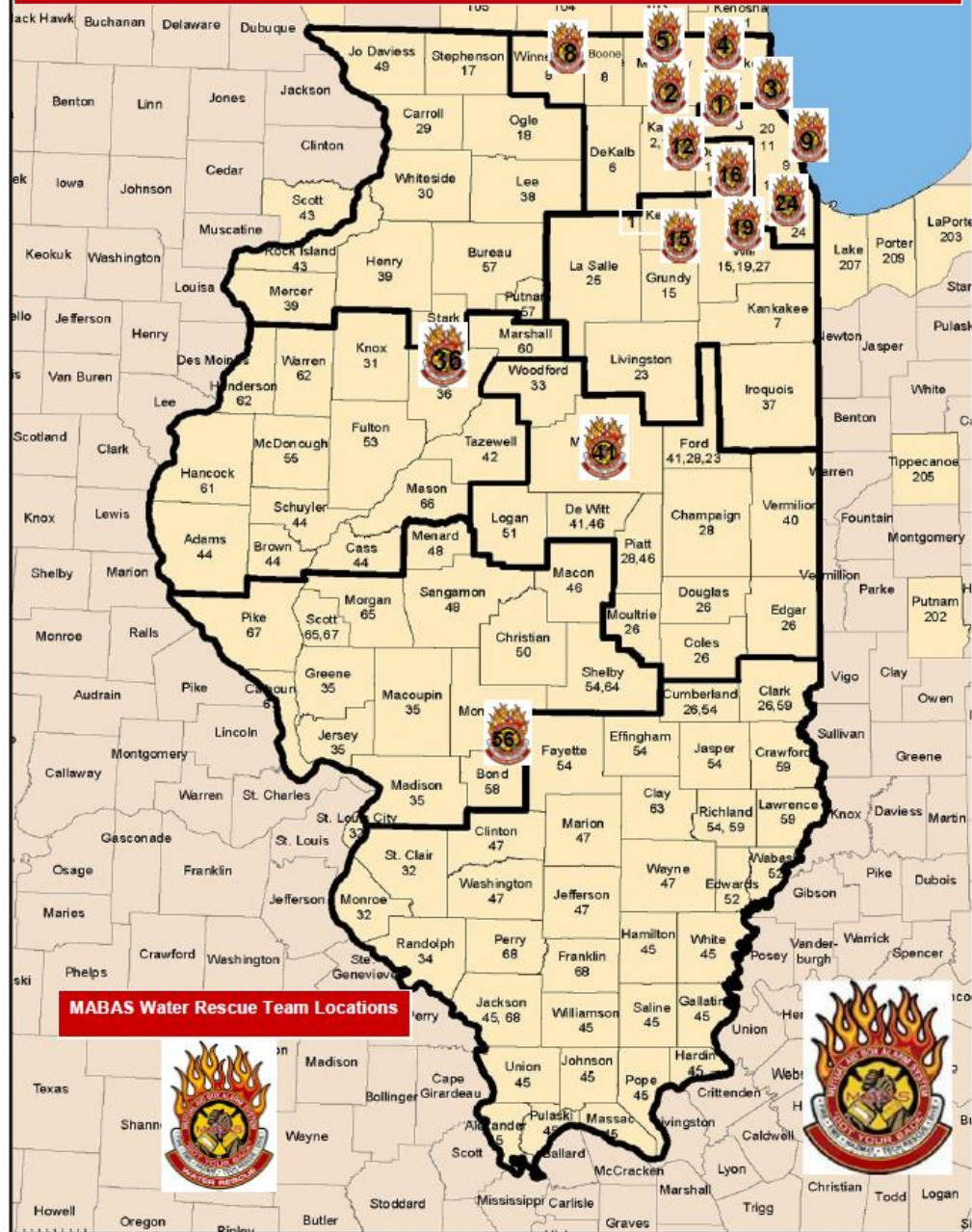
(INCLUDES IL-TF1 & COOK COUNTY SWIFT WATER RESCUE TEAMS)

- AVAILABLE BY INTERDIVISIONAL REQUEST

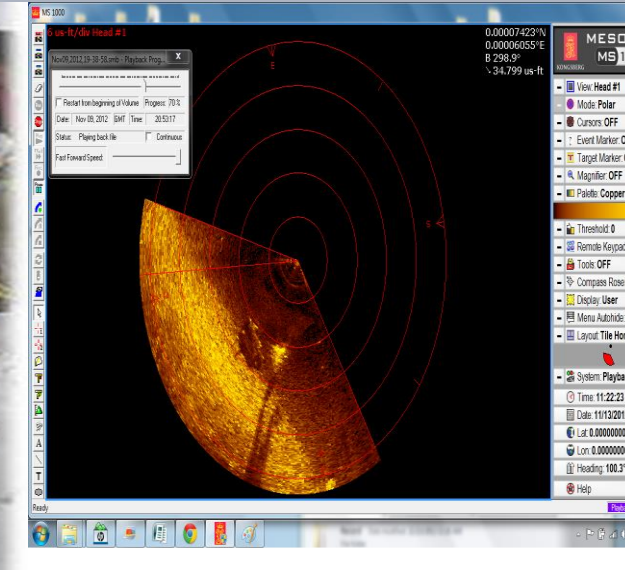
- TRAILER WITH 4 INFLATABLE BOATS STAGED AT THE MRC, AVAILABLE THROUGH RED

Illinois - Mutual Aid Box Alarm System (MABAS)

Water Rescue Team Location

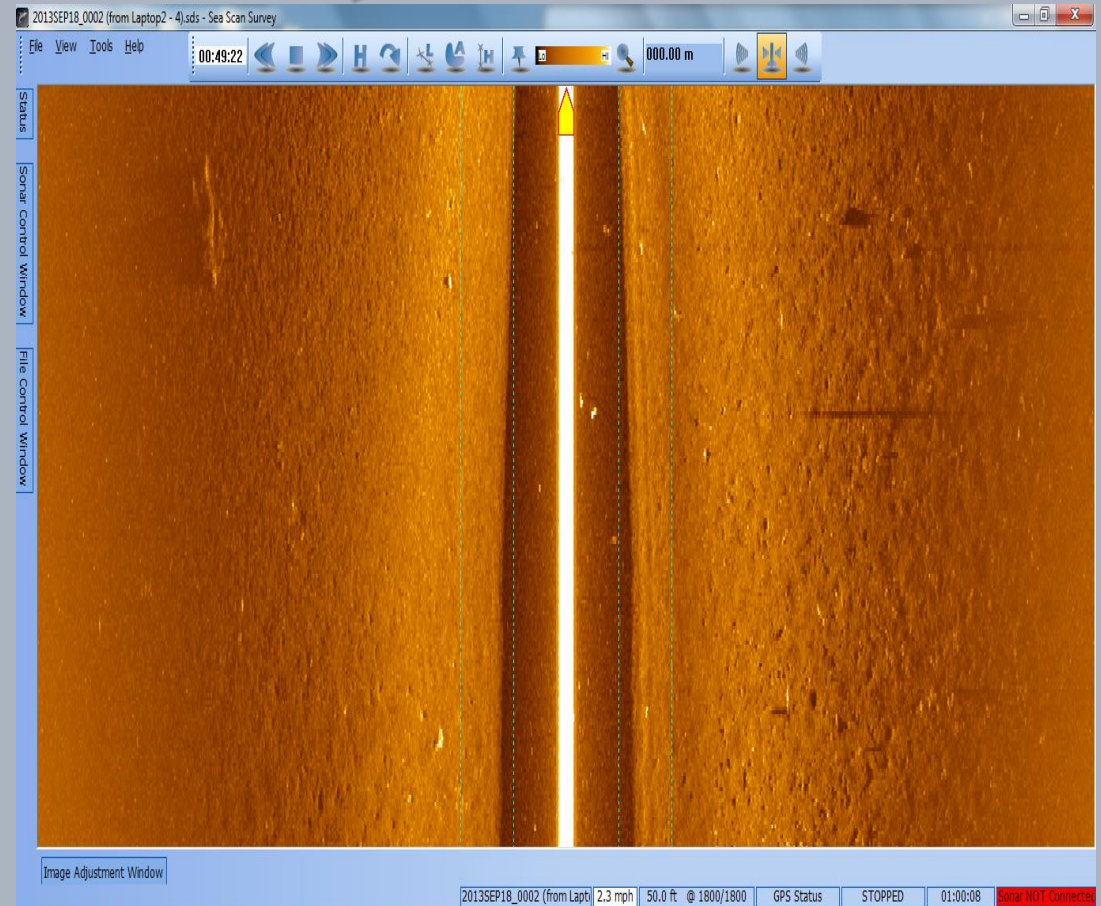
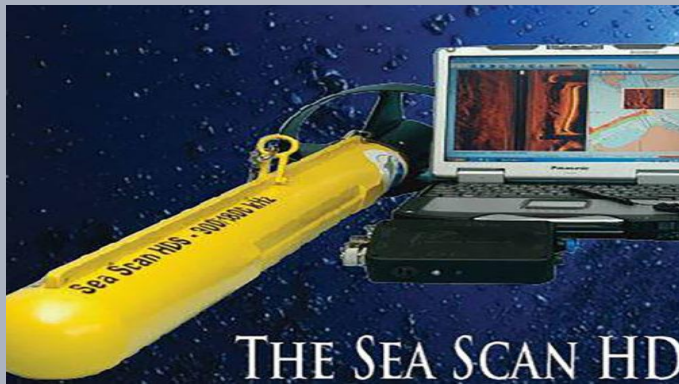


WATER RESCUE - SECTOR SCAN SONAR



■ AVAILABLE BY INTERDIVISIONAL REQUEST

WATER RESCUE - SIDE SCAN SONAR



- AVAILABLE BY INTERDIVISIONAL REQUEST

WATER ROBOT



- REMOTELY OPERATED UNDERWATER HIGH RESOLUTION IMAGING SONAR DEVICE
- ONE IN DIVISION 1, AND ONE IN DIVISION 3
 - AVAILABLE BY INTERDIVISIONAL REQUEST

TECHNICAL RESCUE TEAMS

- STATEWIDE DEPLOYABLE TEAMS CAPABLE OF COLLAPSE, HIGH ANGLE, CONFINED SPACE, AND BELOW GRADE RESCUE
- AVAILABLE BY INTERDIVISIONAL REQUEST

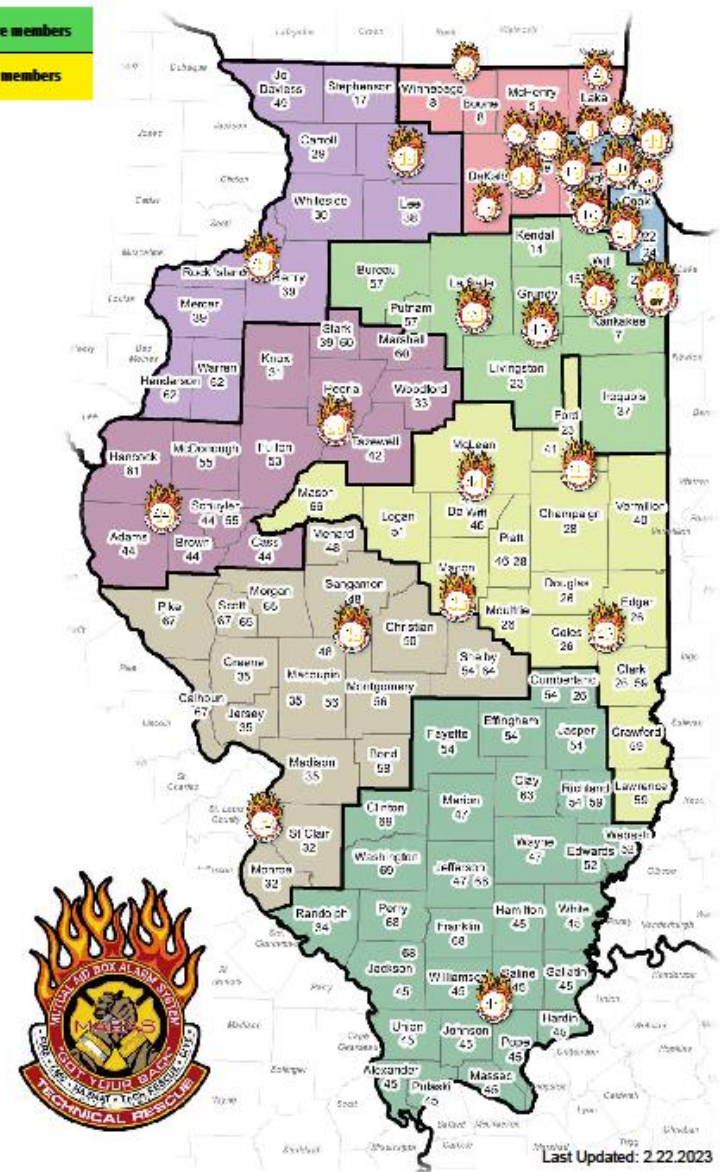
ILLINOIS MUTUAL AID BOX ALARM SYSTEM Technical Rescue Team Locations

Statewide Deployable

20 or more members

14 - 19 members

Division	TRT
1	1
2	2
3	3
4	4
6	6
8	8
9	9
10	10
11	11
12	12
13	13
15	15
16	16
18	18
19	19
20	20
21	21
25	25
26	26
27	27
28	28
32	32
36	36
41	41
43	43
44	44
45	45
46	46
48	48



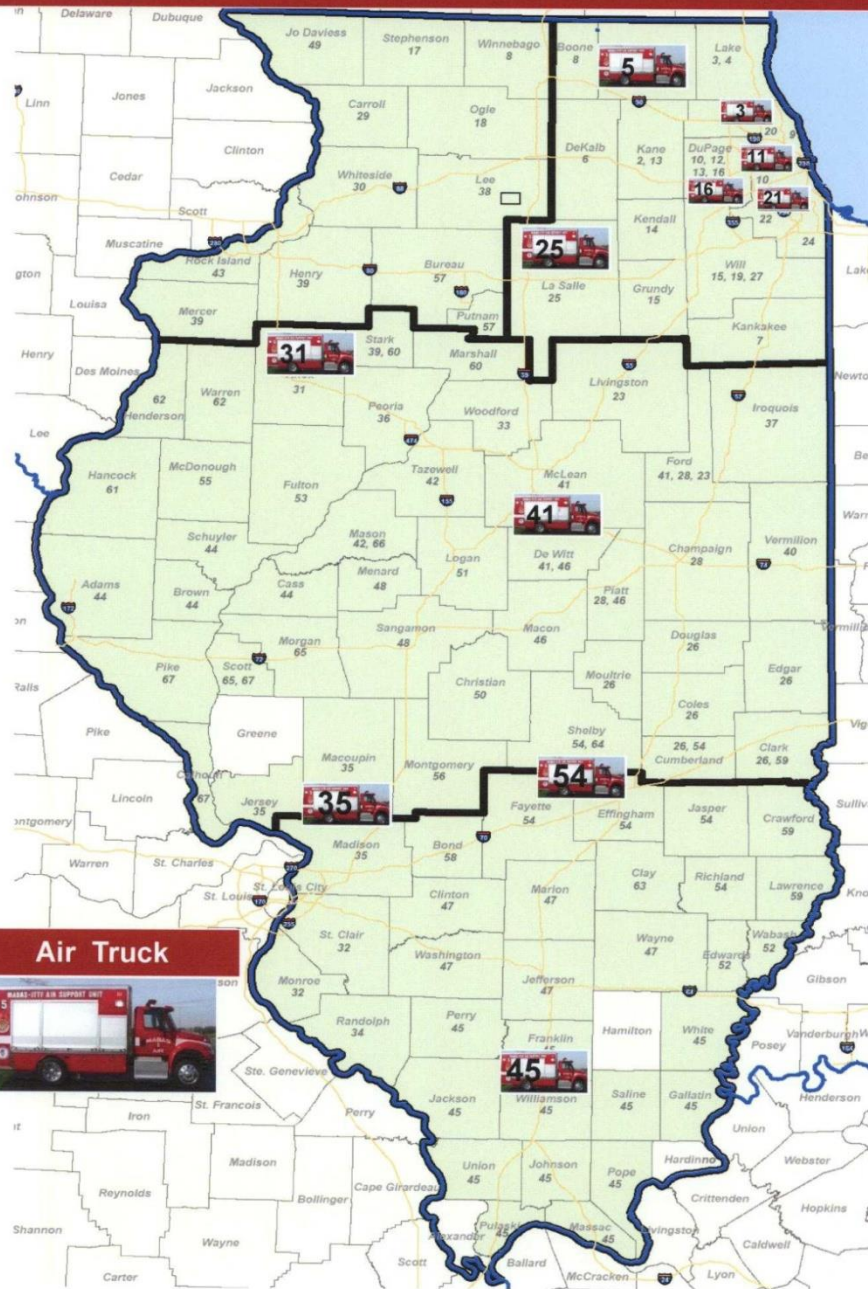
Last Updated: 2.22.2023

AIR SUPPORT UNITS



- 11 AIR UNITS AVAILABLE ACROSS THE STATE, AVAILABLE BY INTERDIVISIONAL REQUEST
- THIS VEHICLE IS CAPABLE OF FILLING BREATHING AIR BOTTLES FROM NUMEROUS MANUFACTURERS FOR FIREFIGHTING, CONFINED SPACE, HAZMAT AND FOR DIVERS.

Illinois Mutual Aid Box Alarm System Air Trucks Locations



GENERATOR LIGHT TRAILERS

KEY FEATURES:

- ONE PER DIVISION
(COOK COUNTY DIVISIONS HAVE 2 EACH)
- 20 KW GENERATOR
- 4 1000 WATT TELESCOPING MERCURY VAPOR LIGHTS

AVAILABLE BY INTERDIVISIONAL REQUEST



ALL TERRAIN UTILITY VEHICLES



- ONE PER DIVISION
- AVAILABLE BY INTERDIVISIONAL REQUEST
- CAN TOW ITS OWN TRAILER
- EQUIPMENT ON EACH VARIES,
AS CHOSEN BY THE DIVISION

MOBILE VENTILATION UNITS



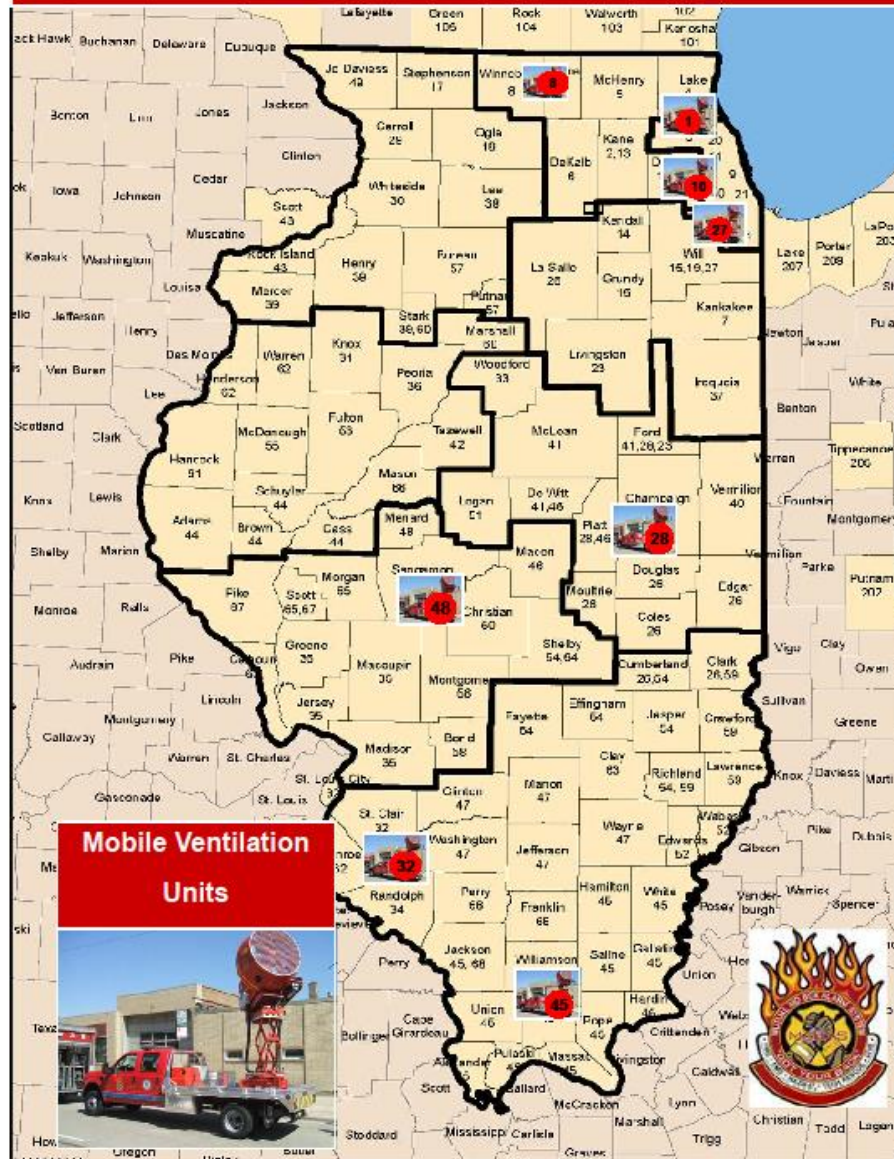
- 8 UNITS ACROSS THE STATE
 - 100 HP FAN
 - 360* ROTATION
 - UP TO 18' IN HEIGHT
 - TILT ADJUSTABLE
 - AVAILABLE BY INTERDIVISIONAL REQUEST

MANY USES FOR THE MVU

- BUILDING VENTILATION
- MASS DECONTAMINATION
- LARGE AREA ATMOSPHERE CONTROL
- MISTING FEATURE



Illinois Mutual Aid Box Alarm System Mobile Ventilation Unit Locations



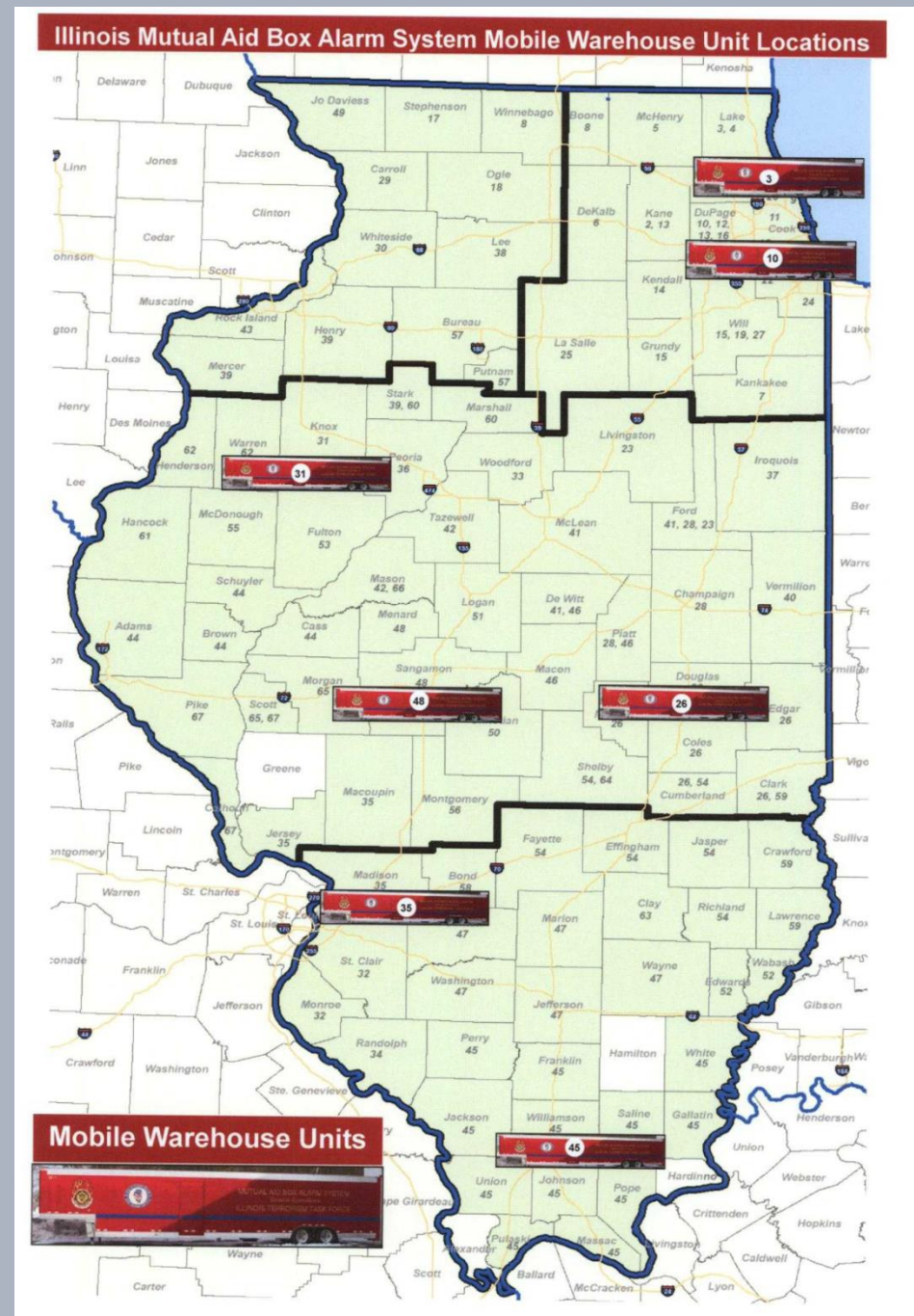
MOBILE WAREHOUSE



- THESE 7 TRAILERS ARE DESIGNED TO SUPPORT THE OPERATION OF A BASE CAMP AND CARRY A VAST ARRAY OF MATERIALS
 - REQUESTED THROUGH RED CENTER

MOBILE WAREHOUSE

- HARDWARE
- TOOLS
- LUMBER
- GENERATORS
- CHAIN SAWS
- SHOVELS
- BROOMS
- AND MORE



DIVISIONAL EXPEDIENT SHELTERS



- ONE TENT/TRAILER PER DIVISION
- 20 BUNKS PER TENT, WITH SUPPORT EQUIPMENT
- AVAILABLE BY INTERDIVISIONAL REQUEST



DIVISIONAL EXPEDIENT SHELTERS



TENT CITY TRAILER



- 3 TRAILERS HOUSED AT THE MRC IN WHEELING

- 10 TENTS EACH

- 220 BUNKS

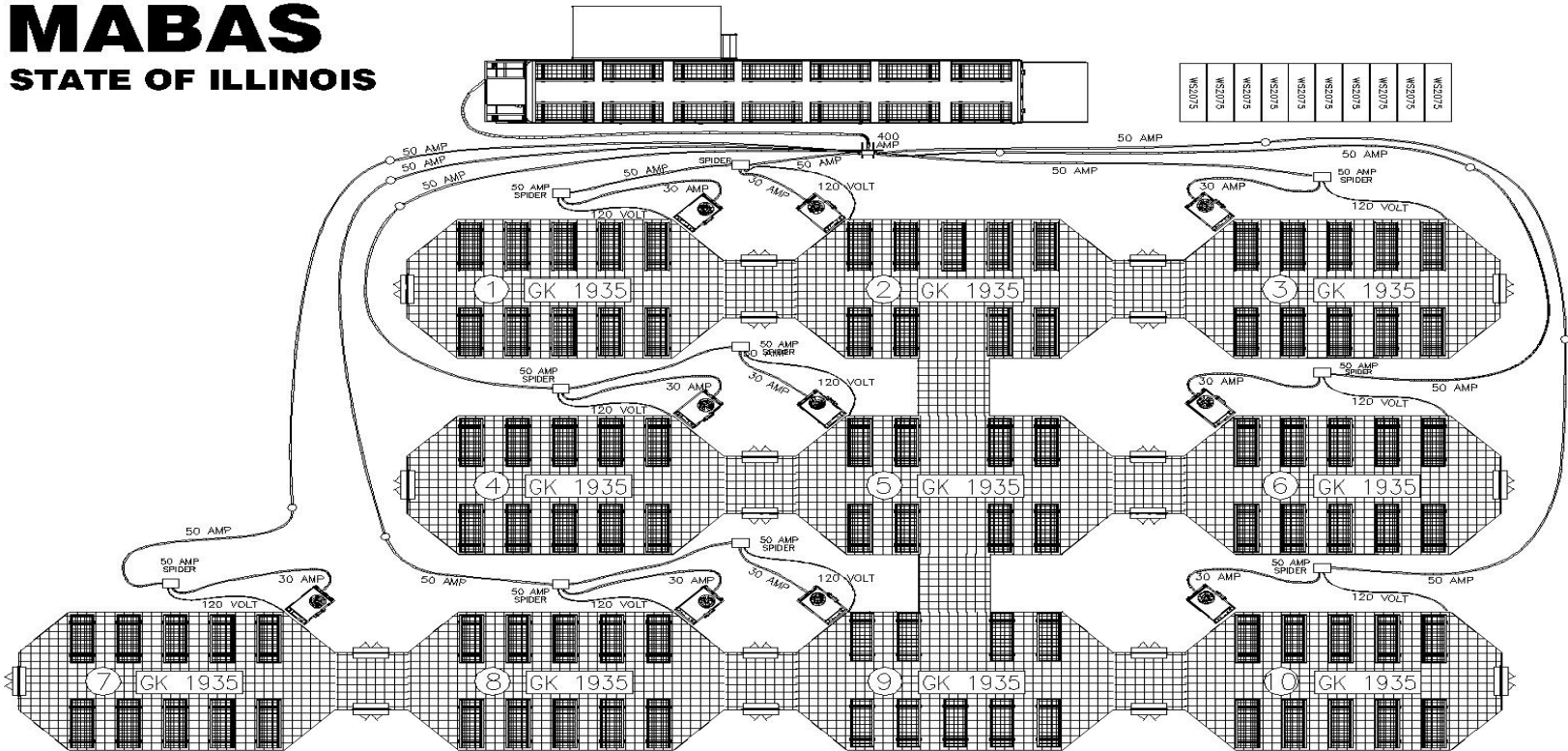
- A/C, HEATERS AND GENERATORS FOR EACH TENT

- REQUESTED THROUGH RED CENTER



TENT CITY LAYOUT (ONE TRAILER)

MABAS STATE OF ILLINOIS




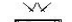
DESCRIPTION

- 10 - GK1935 = 570 SQUARE FEET X 10 = 5700 SQ FT
- 9 - VESTIBULE/PORCH = 58 SQ FT X 9 = 522 SQ FT
- TOTAL ENCLOSED AREA = 6222 SQUARE FEET
- FLOOR GRID = 1 FOOT SQUARES
- 10 - WS-XE1200 HVAC
- 110 - BUNK BED (2 PERSON)
- 1 - WS-PDP400 400 AMP POWER DIST CTR
- 10 - WS-EDK50 50 AMP ELEC DIST KIT

NOTE FOR COLD WEATHER

ADDITIONAL 10 EACH 50 AMP 240 VOLT CABLES, 100 KVA GENERATOR & 400 AMP DISTRIBUTION PANEL AND/OR 10 EACH CV-125K SPACE HEATERS WITH FLUES AND DUCTING

LEGEND

-  BUNK BED
-  DOUBLE DOOR
-  HVAC XE1200
-  WS2075TC

TENT CITY MISSION

MARION FLOODS



MOBILE SUPPORT UNITS



- 4 VEHICLES IN SERVICE
 - NORTH, NORTHWEST, CENTRAL AND SOUTH
 - OFFICE AREA FOR INCIDENT COMMAND, CREDENTIALING AND PROCESSING OF RESPONDERS
 - REQUESTED THROUGH RED CENTER

URBAN SEARCH AND RESCUE



- **THE TEAM IS CONSTRUCTED TO FEMA US&R TEAM STANDARDS AND REQUIREMENTS, AND IS CURRENTLY THE ONLY ACCREDITED TEAM IN THE COUNTRY!**
 - **240 MEMBERS ASSIGNED TO THREE (3), 80 PERSON PACKAGES, AVAILABLE THROUGH IEMA**
 - **HAZARDOUS MATERIALS**
 - **TECHNICAL RESCUE**
 - **WATER RESCUE**
 - **LOGISTICAL SUPPORT**
 - **COMMUNICATIONS**
 - **SEARCH DOG TEAMS**
 - **MEDICAL**
 - **DRONE TEAMS**
 - **STRUCTURAL ENGINEERS**
 - **COMMAND AND CONTROL**

USAR SUPPORT



FLEET MAINTENANCE



- FULL MACHINE SHOP, WELDERS, COMPRESSORS, ETC
- HYDRAULIC LIFTS
- 50KW GENERATOR
- 2 FUEL PUPS
 - PRIMARILY BASED OUT OF THE MRC
 - LARGE DEPLOYMENTS ONLY



EMS SUPPORT UNIT

■ A MULTI-PURPOSE SELF-CONTAINED VEHICLE

■ MASS CASUALTY

- TRIAGE KITS
- 50 BACKBOARDS

■ FATALITY MANAGEMENT

- 100 CADAVER BAGS

■ MORGUE TRUCK

- USAR ASSET REQUESTED THROUGH RED CENTER



EMS TRIAGE / TREATMENT



- US&R ASSET
- ALS EQUIPPED
- 3 FULLY EQUIPPED TREATMENT SUITES, SUPPORTED BY MEDICAL VOLUNTEERS FROM ACROSS THE STATE
- REQUESTED THROUGH RED FROM THE MRC

EMS TRIAGE / TREATMENT



UNIFIED COMMAND POST



- 17 VEHICLES ACROSS THE STATE
- VIDEO AND SATELLITE CAPABILITIES
- INTEROPERABLE COMMUNICATIONS WORK STATIONS
- CONFERENCE AREA
- AVAILABLE BY INTERDIVISIONAL REQUEST OR THROUGH ILEAS

ILLINOIS TRANSPORTABLE EMERGENCY COMMUNICATIONS SYSTEM

- 10 ITECS TRAILERS THROUGHOUT THE STATE, AVAILABLE THROUGH IEMA
- 10 KW GENERATOR
- SATELLITE DISH, 50' TILT AND RAISE TOWER
- POWER DISTRIBUTION AND UPS
- UHF, VHF & STARCOM 21 RADIOS
- SATELLITE ELECTRONICS
- COMPUTERS AND NETWORK CAPABLE
- TELEPHONE AND P.A. SYSTEMS



UCP AND ITECS



ILLINOIS LAW ENFORCEMENT ALARM SYSTEM



ILLINOIS PUBLIC WORKS MUTUAL AID NETWORK



IPWMAN

ILLINOIS PUBLIC WORKS MUTUAL AID NETWORK



QUESTIONS?

PLANNING AND
MOBILIZATION
REFERENCE GUIDE
FOR MABAS
DIVISIONS AND
DISPATCH
CENTERS

FIRE, EMS AND
SPECIAL
OPERATIONS
TEAMS

ILLINOIS STATEWIDE MUTUAL AID

MABAS PREPAREDNESS WORKBOOK

AUGUST 2023



♦ ♦ ♦ ♦ ♦
For Official Use Only
CONFIDENTIAL