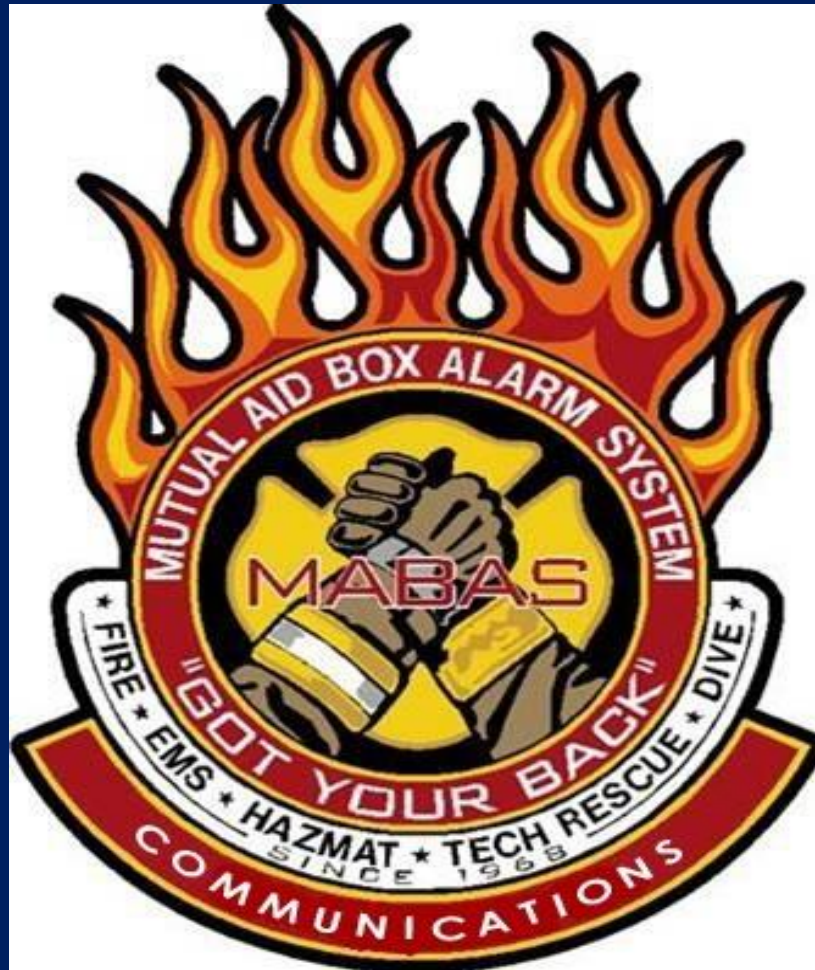



Mutual Aid: Statewide and Beyond!



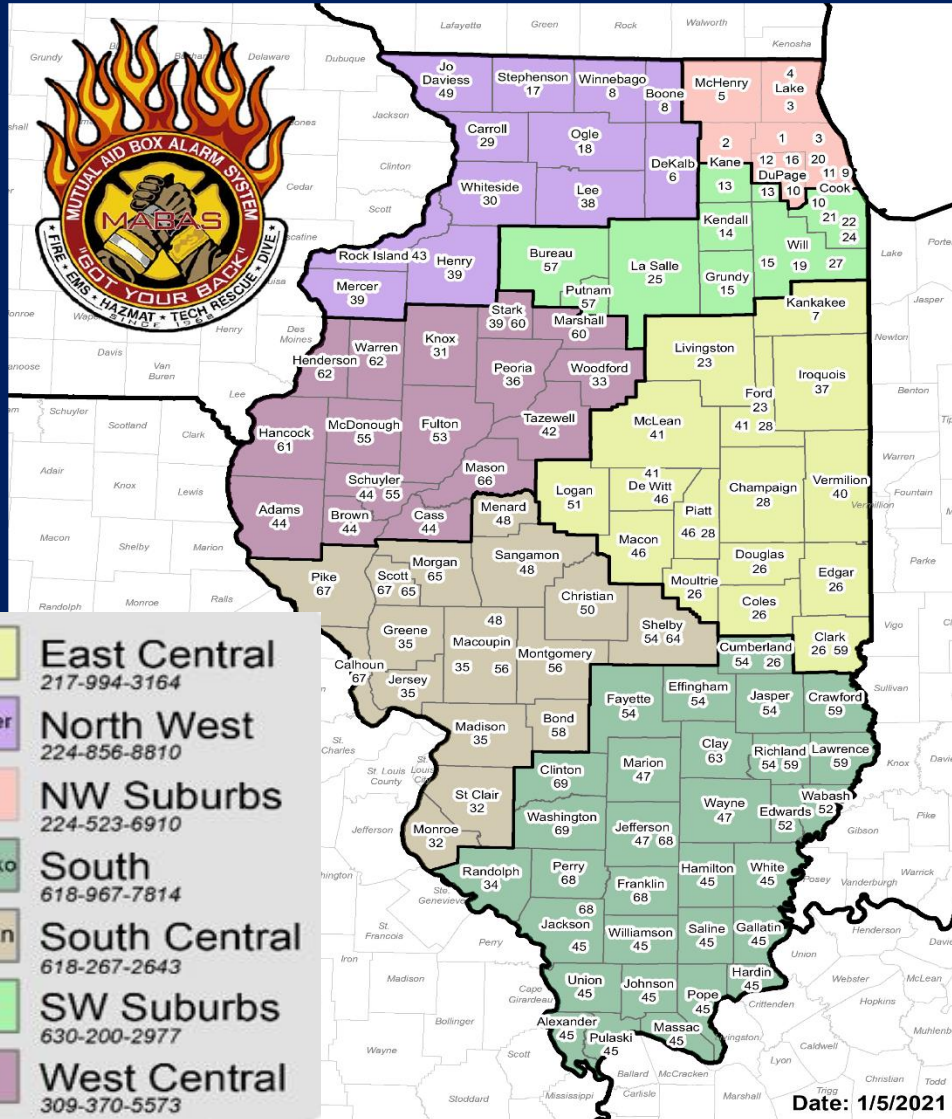
Additional Assistance Box Cards

- **Inbound and Outbound**
 - Inter-Divisional resource requests**
 - **Task Force**
 - **Strike Teams**
 - **Special Teams / Equipment**

Have all area resources been utilized ?

DEPARTMENT	BOX ALARM TYPE:			REVISED DATE:	MABAS DIVISION:		
New Lenox	STRUCTURE FIRE			3/1/18	19		
BOX ALARM #	LOCATION OF AREA:			AUTHORIZED SIGNATURE			
1691	North of Route 30			Chief Adam Riegel			
LOCAL DISPATCH AREA:							
ALARM LEVEL	ENGINES	TRUCKS	EMS	COMMAND	SPECIAL EQUIPMENT	CHANGE OF QUARTERS	STA #
STILL	Engine 62 Engine 63 Engine 64 Mokena	Truck 61	Ambulance 63	BC 61 BC 71	Alpha Page for Manpower to stations on all working fires		
FULL STILL	East Joliet Homer Lockport	Frankfort	Orland - Amb Kurtz - Amb	Mokena - Chf Frankfort - Chf East Joliet - Chf Manhattan - Chf MABAS 19 IMT's	MABAS 19 Fire Investigators New Lenox ESDA Manhattan Squad - Air	Tinley Park Eng 61 N/W Homer Amb 61 Peotone Chf 61 Peotone Eng 63 Elwood Amb 63	
MAYDAY RESPONSE RESOURCES:	Mokena Lockport		Homer - Amb				
MABAS BOX ALARM:							
ALARM LEVEL	ENGINES	TRUCKS	EMS	COMMAND	SPECIAL EQUIPMENT	CHANGE OF QUARTERS	STA #
BOX	Tinley Park Peotone	Troy	N/W Homer - Amb Palos - Amb	Peotone - Chf Homer - Chf MABAS 19 Comm	Frankfort Rehab	Lemont Eng 61 Romeoville Amb 61 Wilmington Trk 61 Lemont Chf 61 Rockdale Eng 63	
2nd	Lemont Joliet	Wilmington	Elwood - Amb Romeoville - Amb	Orland - Chf Lockport - Chf		Argonne Eng 61 Plainfield Amb 61 Manteno Trk 61 Monee Eng 63 Channahon 63	
3rd	Rockdale Argonne	Manteno	Plainfield - Amb Channahon - Amb	Lemont - Chf Troy - Chf Orland Comm Van		Monee Eng 61 Chicago Hts Trk 61 Palos Hts Amb 61 Plainfield Chf 61 Dar-Wood Eng 63 Braidwood Amb 63	
4th	Monee Darien Woodridge	Chicago Heights	Palos Heights - Braidwood - Amb	Plainfield - Chf Wilmington - Chf		Tri-State Eng 61 Down Grv Trk 61 Bourbonnais 61 Minooka Amb 63 Morris Eng 63 Palos Hts Chf 61	
INTERDIVISIONAL REQUEST	1st CHOICE		2nd CHOICE		3rd CHOICE	Box Alarm #	
	24		10		27		
INFORMATION:					STRUCTURE FIRE	1691	

Know your neighbors!!!



June 2021
(Damn, we were busy!)

- Wood River Acid Spill
- Rockton Explosion
- Naperville Tornado
- Morris Battery Fire
- On going Covid-19 assistance
- Numerous exercises

Task Force vs. Strike Team

- **Confusion of terminology is common among all parties. Often the wrong type of response is requested by Incident Commanders, only to cause confusion in the dispatch center, the fire-ground, and with responding companies.**

The definition of a Strike Team

- **5 “like” pieces of apparatus**

Examples-

- **5 Engine Companies**

- **5 Truck Companies**

- **5 Ambulances**

- **These companies would usually be due to an escalating incident in a requesting/stricken division!**


The definition of a Task Force

- **A Task Force is various pieces of apparatus, which operate as a whole package, generally used to backfill a stricken area.**
- **ALL companies muster and convoy together.**
- **The Task Force reports to an assigned staging area, usually centrally located in the requesting MABAS Division (Fire Station, Mall parking lot, etc)**
- **The assigned Chief should be the sole Communications contact with MABAS dispatchers, and operate under the radio signature of 'Task Force (Div#)'**

Task Force

- **A Task Force is comprised of;**
 - **2 Engine companies**
 - **1 Truck company**
 - **1 Heavy Rescue Squad**
(or Truck company)
 - **3 Ambulances (ALS preferred)**
 - **2 Chief Officers**

MABAS DIVISION	BOX ALARM TYPE:	REVISED DATE:	MABAS DIVISION:
MABAS 19	INTERDIVISIONAL / OUTBOUND TASK FORCE	3/1/19	19
BOX ALARM #	LOCATION OF AREA:	AUTHORIZED SIGNATURE	
19-TF	INTERDIVISIONAL	Division 19 President	

MABAS DISPATCH						
ALARM LEVEL	ENGINES(2)	TRUCKS(1)	EMS(3)	COMMAND(2)	SPECIAL EQUIPMENT	
PRIMARY	Palos Manhattan	Orland	Frankfort Amb Lockport Amb Palos Heights Amb	2 Chiefs selected from MABAS 19 ST/TF Notification Procedure	Mokena Rescue Engine	
ALTERNATE	Lemont New Lenox	Lockport	Homer Amb East Joliet Amb Peotone Amb	2 Chiefs selected from MABAS 19 ST/TF Notification Procedure	Peotone Rescue Engine	

INFORMATION:

1. Complete ST/TF Worksheet
2. Notify MABAS 19 IMT's via lamResponding for Strike Team/Task Force le
3. Relay ST/TF worksheet information for the MABAS 19 ST/TF Leader
4. Receive verification of response type from ST/TF leader
5. Dispatch Resources

DISPATCH CENTERS:

WESCOMMABAS 15 815-439-4230
 GRUNDY COUNTY 815-942-0336
 KANCOMM/MABAS 7 815-937-8479
 ORLAND/MABAS 19 708-349-3141
 LARAWAY 779-803-5000

Available Truck Companies

East Joliet
 Frankfort
 Lemont
 Lockport
 Mokena
 New Lenox
 Orland
 Peotone
 Palos
 Palos Heights

Box Alarm #

INTERDIVISIONAL / OUTBOUND TASK FORCE

19-TF

General Rules of thumb:

Strike Team = “Going to work”

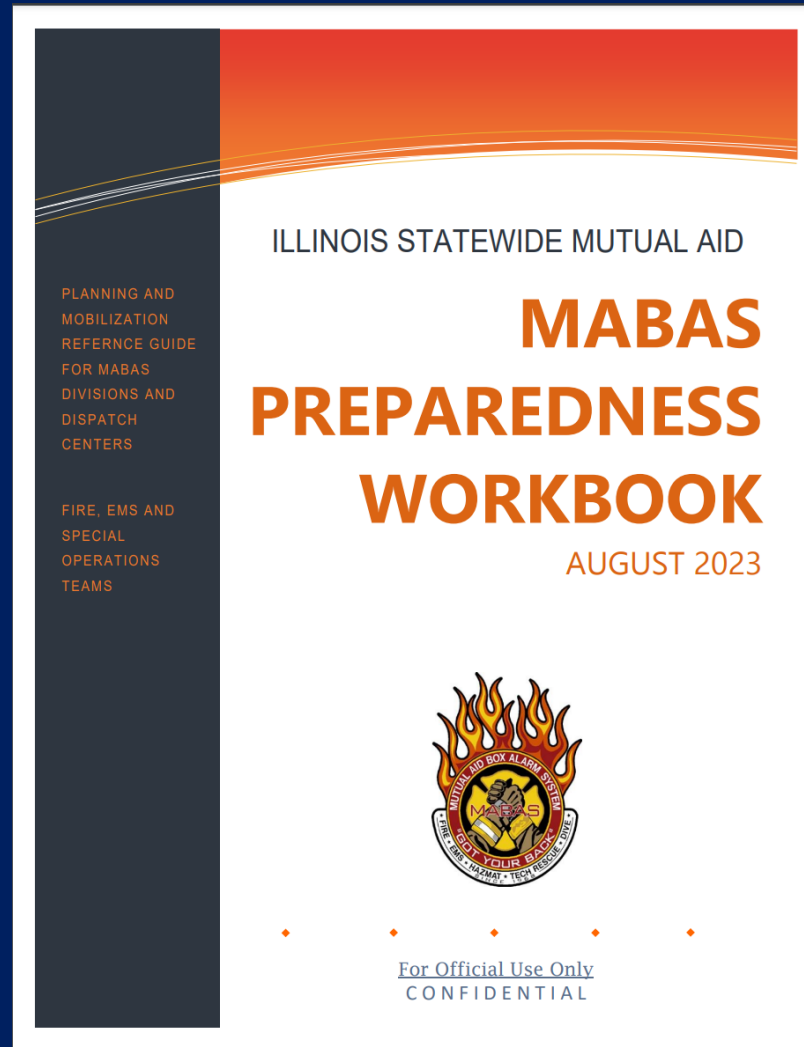
**Task Force = “Going to protect” or
“Large C. of Q.”**

HOWEVER... Regardless of type of request, once dispatched, use of these companies is at the discretion of the Incident Commander!

Statewide Requests

- **The Statewide Mutual Aid Plan is designed to assist a stricken area, when all area resources have been exhausted**
- **Requested companies should be prepared to respond within 2 hours, or specified time**
- **All personnel should be supplied to be self-sufficient for an extended period, minimum of 72 hours**
- **Alarms will be dispatched via the automated notification system, utilizing CIMS 3.0 information**
- **Requests must be made to IEMA via your County EMA**

MABAS Preparedness Workbook



Information needed for IEMA...

- Requesting entity
- I.C. contact info
- Location
- Nature
- Needs
- Reception



Dispatchers Role . . .

- **Monitor IFERN and StarCom 21 - MABAS talkgroup**
- **Locate MABAS Preparedness Workbook**
- **Keep an open dialog with Divisional Executive Board, (and your County EMA Director if its your incident)**
- **Document all personnel, vehicles, radio traffic and travel times**
 - **crucial for reimbursement**

Statewide Deployment Messages

Three types of messages:

- via Text , Voice and Email

- Notification Message (optional)**
- Pre-Tasking Message**
- Tasking Message**

MABAS-ILLINOIS PRE-DEPLOYMENT ROSTER

DATE: TIME: INCIDENT NAME: IEMA MISSION #:
m / d / yy

TYPE: OTHER: INCIDENT LOCATION: MABAS DIVISION #:
from to

PERSONNEL ASSIGNED

Please complete all yellow fields for an OUT OF STATE response.

(Positions 1 and 2, should reflect the unit leaders and list their cell phone numbers.)

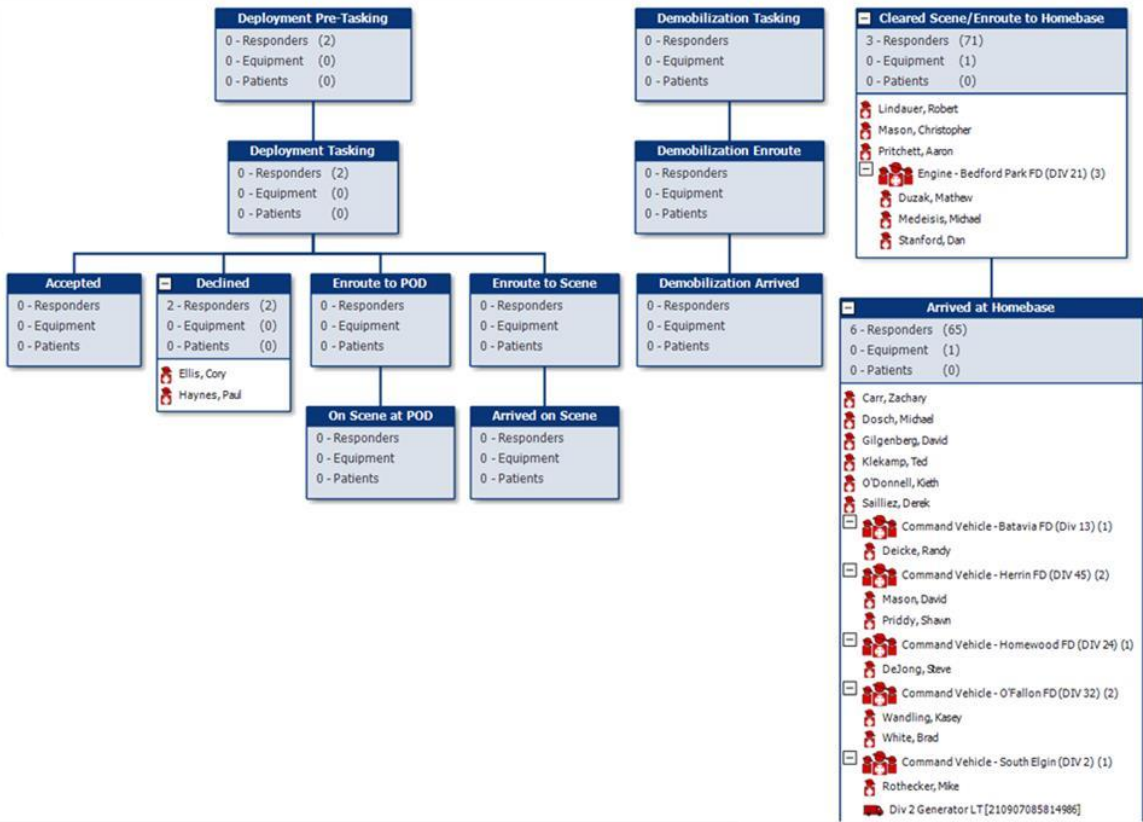
#	First Name	Last Name	Rank	Mobile Phone	E-mail	Regular Salary Hourly Rate	Exempt / Non-exempt	Department	Div
1									
2									
3									
4									
5									
6									
7									
8									
9									
10									
11									
12									

SECURITY VALIDATION CODE WILL BE GIVEN TO THE OFFICER IN CHARGE AFTER RED CENTER RECEIVES THIS COMPLETED DOCUMENT.

E-mail: dispatch@redcenter.org | Fax: (847) 498-5968 | Phone: (847) 724-5700



On Scene	Off Scene
0 - Responders	5 - Responders (5)
0 - Equipment	1 - Equipment (1)
0 - Patients	0 - Patients (0)
<ul style="list-style-type: none"> Bryant, Jeff Crown, Patrick Monahan, Matthew Peterson, Jeff Tompa, Daniel Command Vehicle - Batavia [21090710459938] 	



Cleared Scene/Enroute to Homebase
3 - Responders (71)
0 - Equipment (1)
0 - Patients (0)
<ul style="list-style-type: none"> Lindauer, Robert Mason, Christopher Pritchett, Aaron Engine - Bedford Park FD (DIV 21) (3) Duzak, Mathew Medeisis, Michael Stanford, Dan

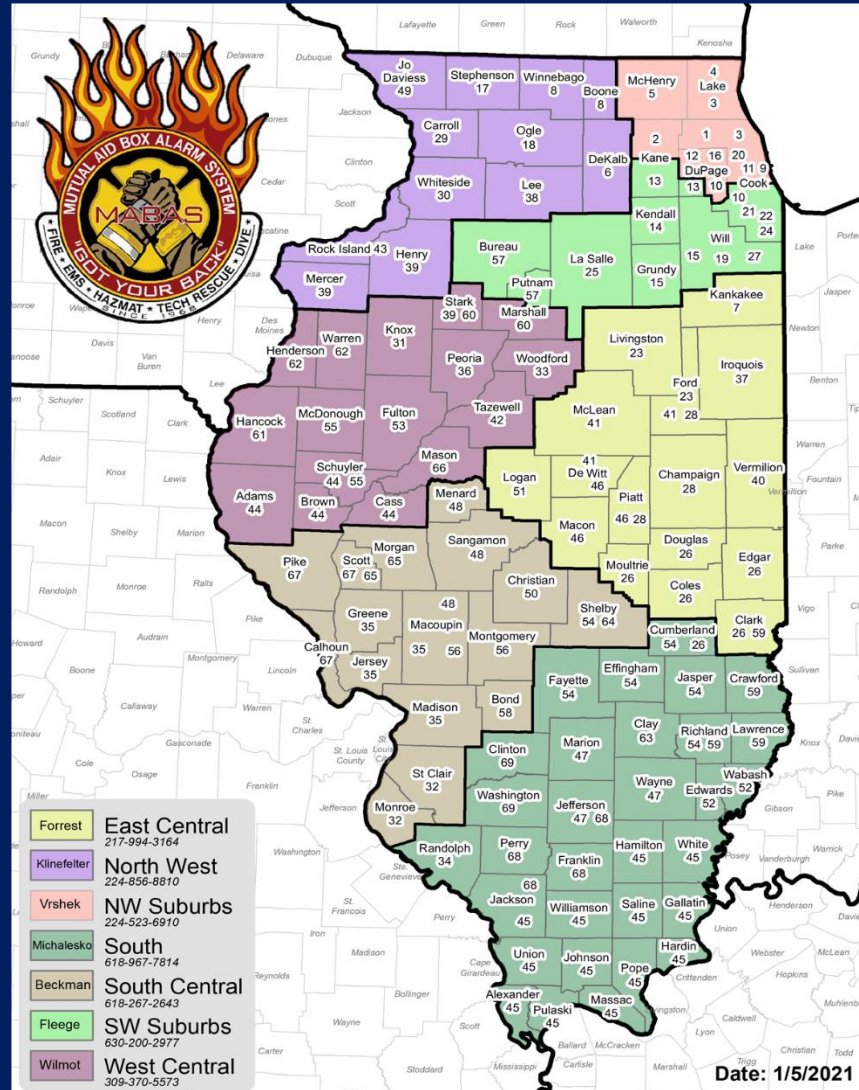
Arrived at Homebase
6 - Responders (65)
0 - Equipment (1)
0 - Patients (0)
<ul style="list-style-type: none"> Carr, Zachary Dosch, Michael Gilgenberg, David Klekamp, Ted O'Donnell, Keith Sailliez, Derek Command Vehicle - Batavia FD (Div 13) (1) Deicke, Randy Command Vehicle - Herrin FD (DIV 45) (2) Mason, David Priddy, Shawn Command Vehicle - Homewood FD (DIV 29) (1) DeJong, Steve Command Vehicle - O'Fallon FD (DIV 32) (2) Wandling, Kasey White, Brad Command Vehicle - South Elgin (DIV 2) (1) Rothecker, Mike Div 2 Generator LT [210907085814986]

ASSIGNMENT COMPANY RESPONDER EQUIPMENT PATIENT NOTE TIMER

Total PAR 73			Total Patient Count 0			
73	21	1	0	0	0	0
Responder	Company	Equipment	Red	Yellow	Green	White

Remember...

Know your neighbors...



*...Because you may need each other
someday!!!!*

*MABAS Divisions responded to
nearly 4,200 events statewide in
2021, and over 5,820
Last year!*

